

UM FOTA – Enable Automatic Update Step by Step

Requirements:

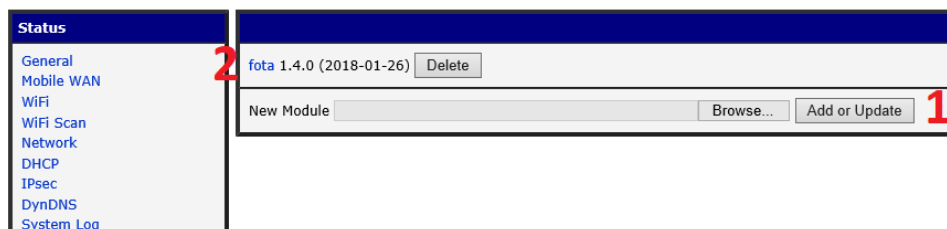
- Router must be connected to the Internet via Ethernet or cellular module
- Do not use private APN in case of Ethernet connection

Module name	Last revision	Min. ver. of router's FW	Module's FW file name
LE910-EU-V2	20.00.403	6.1.5	LE910-EU-V2.bin
LE910-NA1	20.00.524	6.1.5	LE910-NA1.bin
LE910-NA1-SKU	AT&T 20.00.524 Verizon 20.00.014	6.1.5	LE910-NA1-SKU.bin
LE910-NA1-SKU	AT&T 20.00.525 Verizon 20.00.015	6.1.8	LE910-NA1-SKU.bin

FW Compatibility Table

1. Ensure your router has required version of FW (see the Table above).
2. Do not forget that the router must be connected to the Internet!
3. Connect to the web interface of the router.
4. Then select item **User Modules** in the main menu.
5. Use **New Module** field for selecting the user module file (fota.v3.tgz) in your PC.
Then press **Add or Update** button. (1)
6. Select **fota** user module. (2)

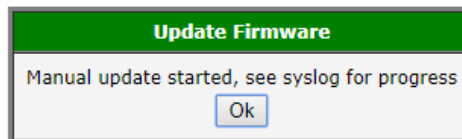
SmartStart LTE Router



7. Select **Enable automatic update** (3) in the new window.
8. Press **Apply** button. (4)
9. Press **Start Manually** button. (5)

Firmware Over-The-Air

Status	<input checked="" type="checkbox"/> 3 Enable automatic update URL = <input type="text"/> Username = <input type="text"/> Password = <input type="password"/> <input type="button" value="Apply"/> <input type="button" value="Start Manually"/>
Information System Log	
Configuration	
Automatic Update	
Customization	
Return	



10. Press **Ok** button and Status page will be displayed.
11. Refresh this page for information about current status.
12. FW update should take up to five minutes.
13. Completed installation:

Firmware Over-The-Air

Status	System Log
Information System Log	System Messages
Configuration	<pre> 2000-01-01 01:49:36 dhcpcd[1126]: wlan0: leased 192.168.7.136 for 3600 seconds 2000-01-01 01:49:36 dhcpcd[1126]: wlan0: adding route to 192.168.7.0/24 2000-01-01 01:49:36 bard[935]: backup route selected: "WiFi STA" 2000-01-01 01:49:36 bard[935]: script /etc/scripts/ip-up started 2000-01-01 01:49:37 dnsmasq[1873]: reading /etc/resolv.conf 2000-01-01 01:49:37 dnsmasq[1873]: using nameserver 192.168.7.1#53 2000-01-01 01:49:37 dnsmasq[1873]: exiting on receipt of SIGTERM 2000-01-01 01:49:37 tottd[2194]: Trick or Treat Daemon (totd) version 1.5.2 2000-01-01 01:49:37 dnsmasq[2199]: started, version 2.78 cachesize 150 2000-01-01 01:49:37 dnsmasq[2199]: reading /etc/resolv.conf 2000-01-01 01:49:37 dnsmasq[2199]: using nameserver 192.168.7.1#53 2000-01-01 01:49:37 dnsmasq[2199]: cleared cache 2000-01-01 01:49:39 bard[935]: script /etc/scripts/ip-up finished, status = 0x0 2000-01-01 01:50:45 dhcpcd: DHCPREQUEST for 192.168.1.2 from a4:4c:c8:e1:98:1c (SKLENARP-NB) via eth0 2000-01-01 01:50:45 dhcpcd: DHCPACK on 192.168.1.2 to a4:4c:c8:e1:98:1c (SKLENARP-NB) via eth0 2000-01-01 01:51:03 wpa_supplicant[1101]: wlan0: WPA: Group rekeying completed with 54:4a:16:03:1d:ed [GTK=CCMP] 2000-01-01 01:51:05 last message repeated 2 times 2000-01-01 01:51:36 fota[2280]: Starting fota 1.4.0 2000-01-01 01:52:10 fota[2280]: Found module:0, Model:LE910-EU-V2, Revision:20.00.402-8070 2000-01-01 01:52:18 fota[2280]: Downloading firmware 2000-01-01 01:52:25 fota[2280]: Downloading firmware done 2000-01-01 01:52:46 fota[2280]: Loading fw. into module 2000-01-01 01:54:11 fota[2280]: Loading fw. done 2000-01-01 01:54:20 fota[2280]: Manual update finished 2000-01-01 01:54:20 fota[2280]: Waiting to next day </pre>
Automatic Update	
Customization	
Return	
	<input type="button" value="Save Log"/> <input type="button" value="Save Report"/>